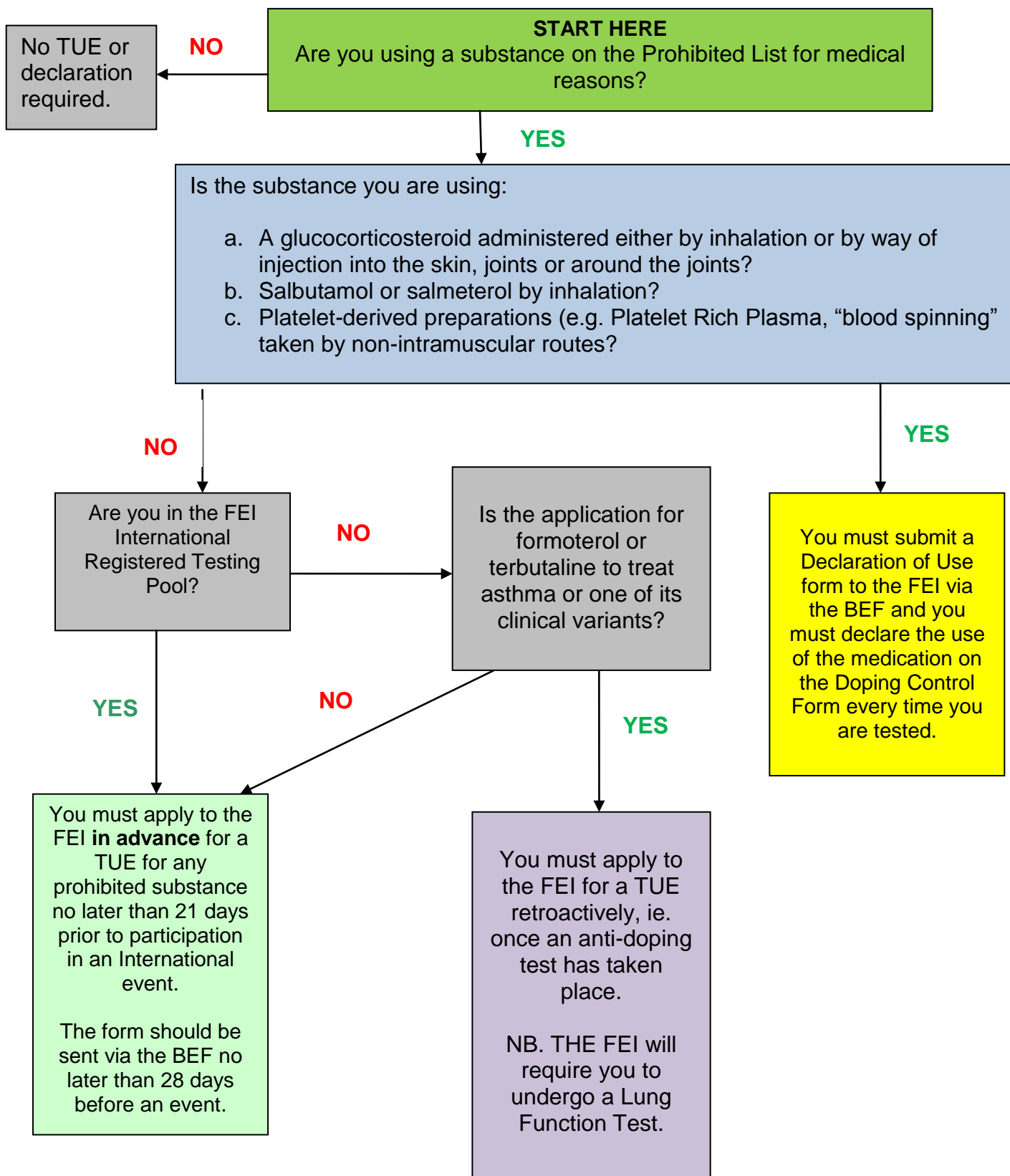


FEI Registered International Riders APPLICATIONS FOR THERAPEUTIC USE EXEMPTION (TUE) AND DECLARATIONS OF USE (DoU)

Anti Doping Rules for Human Athletes, effective 01 January 2010



Please note that this diagram has been prepared to assist you in understanding the requirements but it is no substitute for reading the Anti-Doping Rules.